

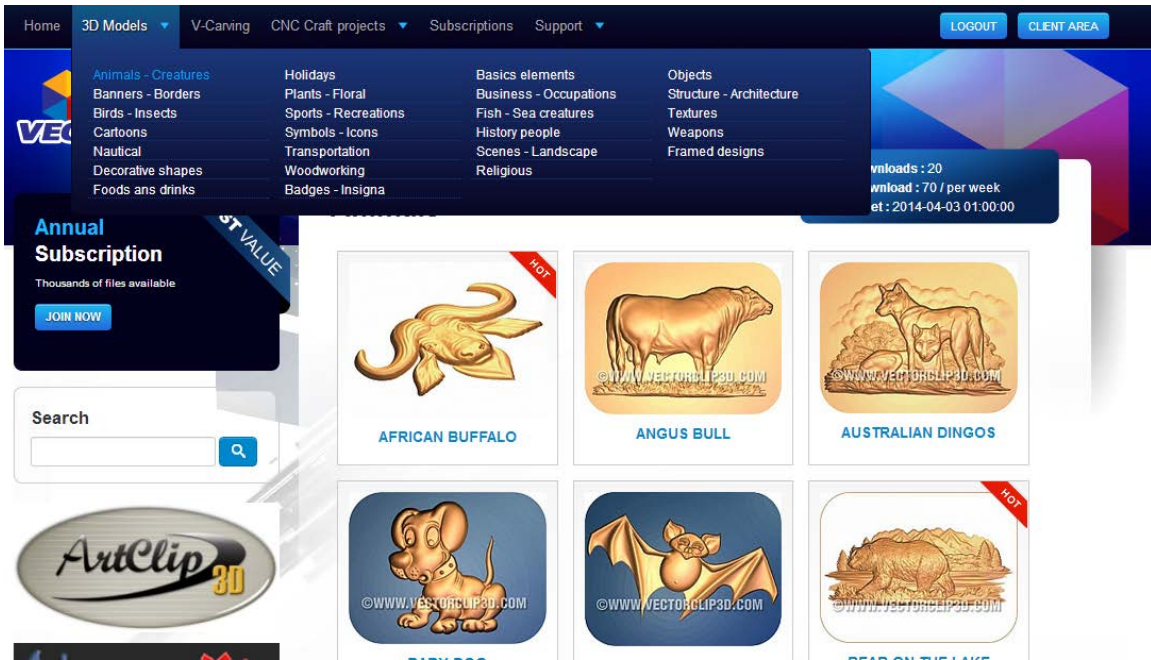


## How to Create your own 3D library ?

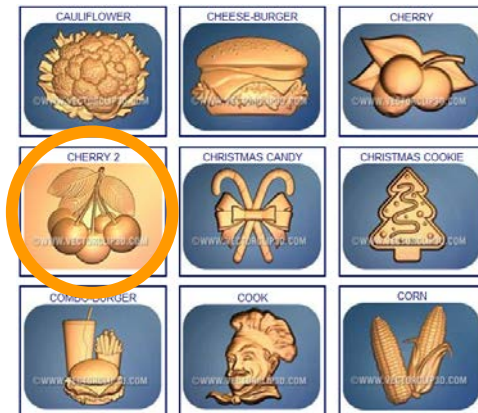
Unleash your Router's 3D Capabilities

Go to [www.vectorclip3D.com](http://www.vectorclip3D.com) using your Internet browser.  
Click on the log-in link located at the top of the screen to open your session.  
Enter your information (Username and password) which was sent to you when you purchased ArtClip3D..

Once logged-in you have full access to the website models.  
Clicking on the 3D models provides you with all the categories.



Select any design category, for instance here the Foods and drinks.  
Then click one of the 3D models available in this category such as Cherry2.



The 3D model is available in 3 file formats.

The VNA stands for **V**ision **n**umeric **A**rt file, this is the main format directly importable in ArtClip3D. It is a 3D mesh surface made of squared polygons with a high level of resolution which are insuring users with a high definition, thin and controlled quality compared to the STL or RLF formats.

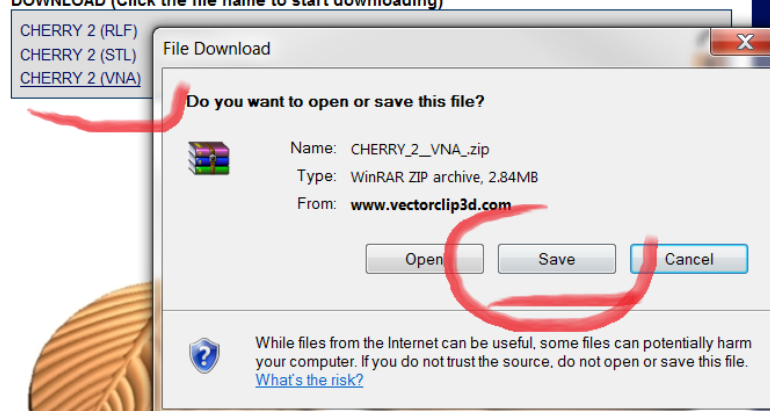


The 3D file can be saved on your computer at any path location needed. It is recommended to save all your models in the same place; for instance with the 200 models already installed with the DVD of ArtClip3D under C:/Artclip3D/3D\_Models.

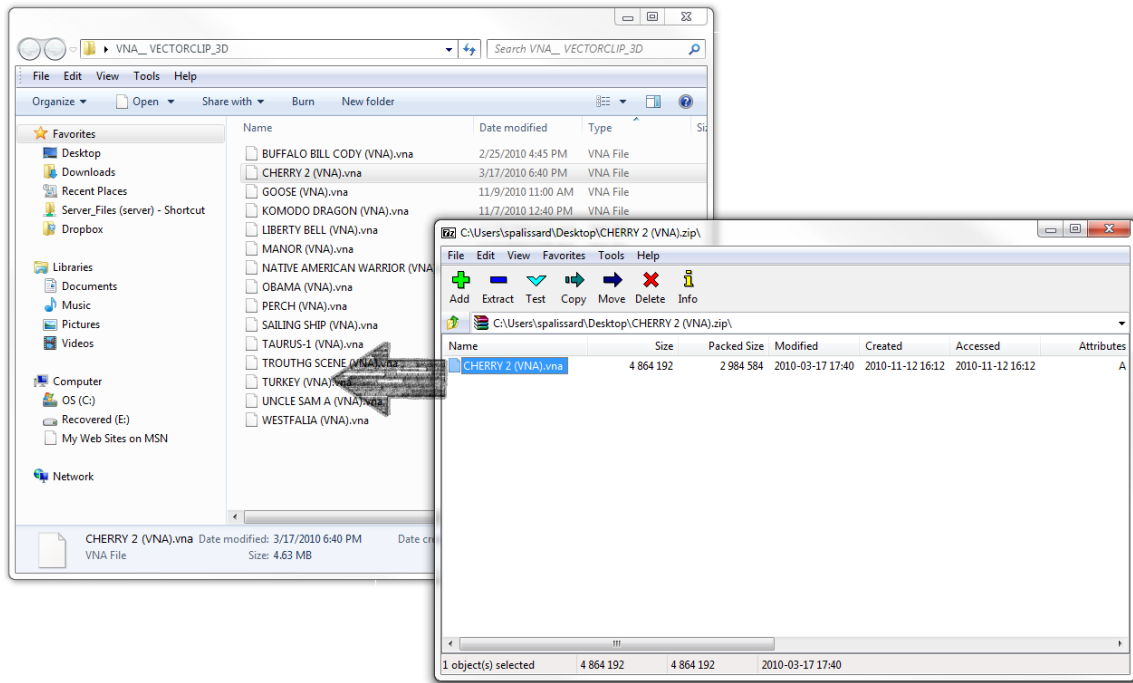
## CHERRY 2

DOWNLOAD (Click the file name to start downloading)

CHERRY 2 (RLF)  
CHERRY 2 (STL)  
CHERRY 2 (VNA)

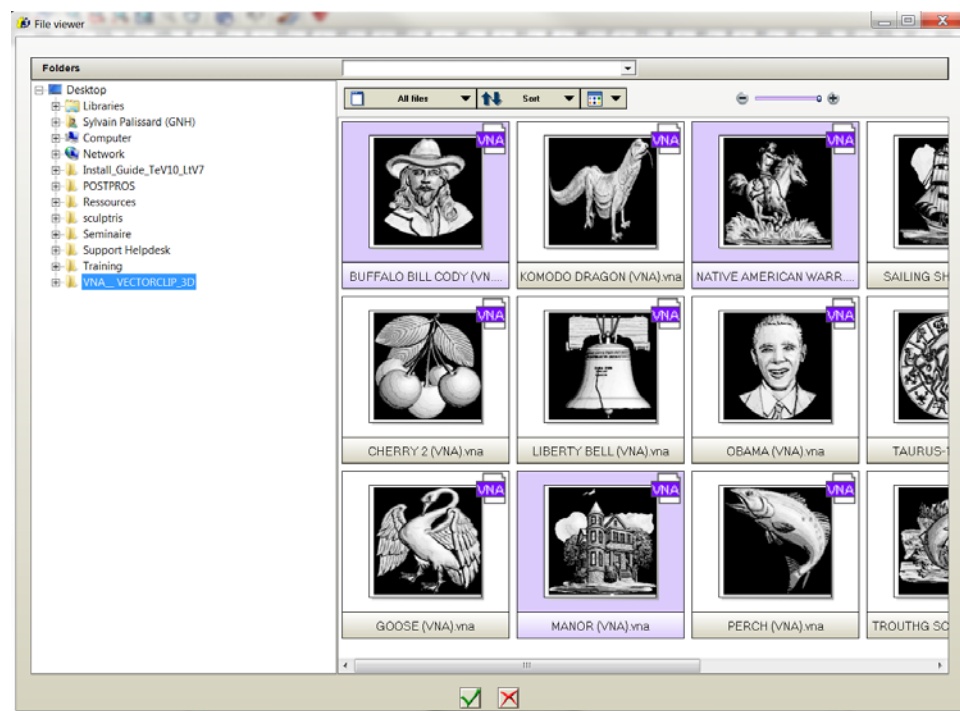


To allow a quick download, the 3D models are compressed, and it will be needed to use a decompressor to reveal them. On <http://www.7-zip.org/> there is a free decompressor application able to extract your VNA with a simple drag and drop from the window to the folder you want to save as it is shown next.



When your selection of VNA is made, you then have a list of files ready to be imported in ArtClip3D either through the File/Import menu or by dragging them in the working area.

By selecting several VNA at the same time, ArtClip3D is able to integer them all in one operation, making the selection easy and smooth as shown below.



Use CTRL key while selecting, the VNA are imported one after the others, on top of each other.



*Then, you can select them and position them as desired. It is possible to resize them as well within the 3D dimensions, but this will be covered in the other tutorials.*



*Adding new objects later on from the library you built is also possible at any time, allowing creations of new scenes by combining new VNAs which are added regularly on the website.*