
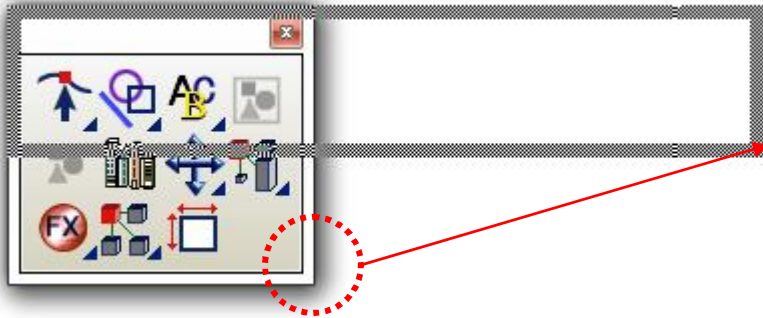
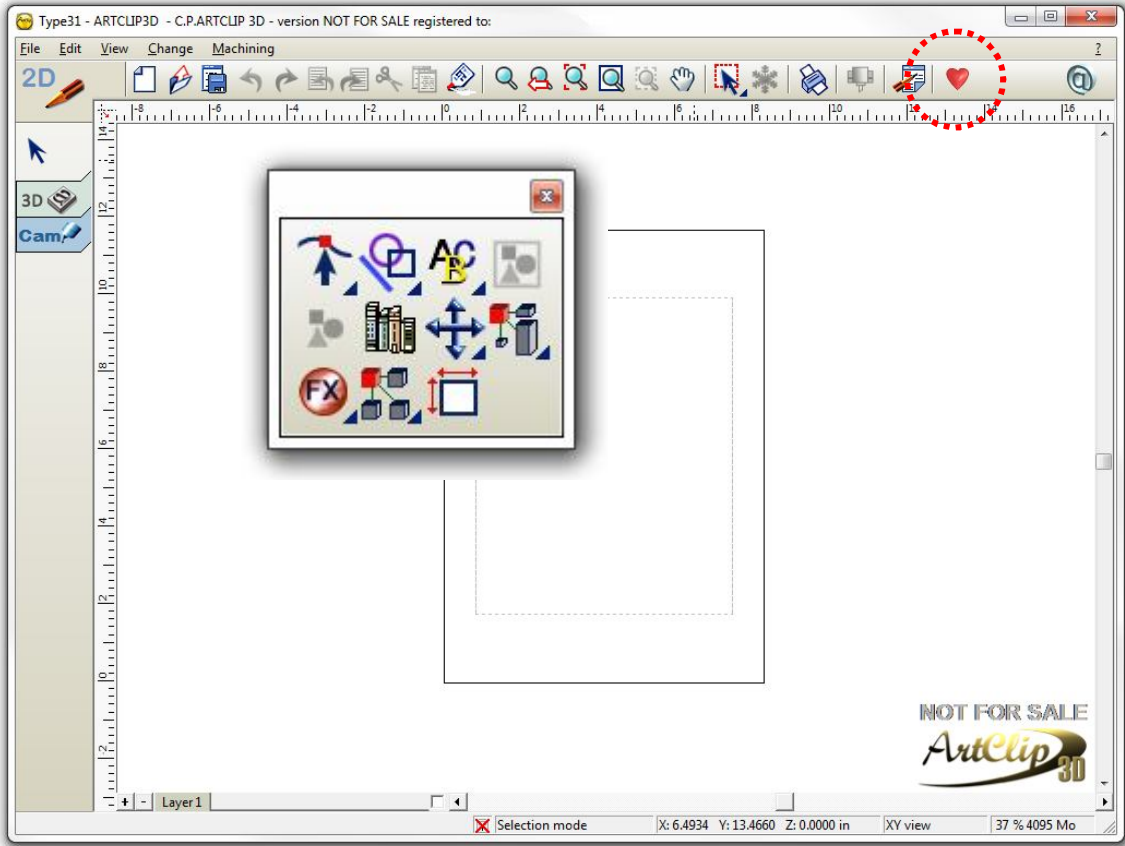




Unleash your Router's 3D Capabilities

Organizing ArtClip3D's General User Interface

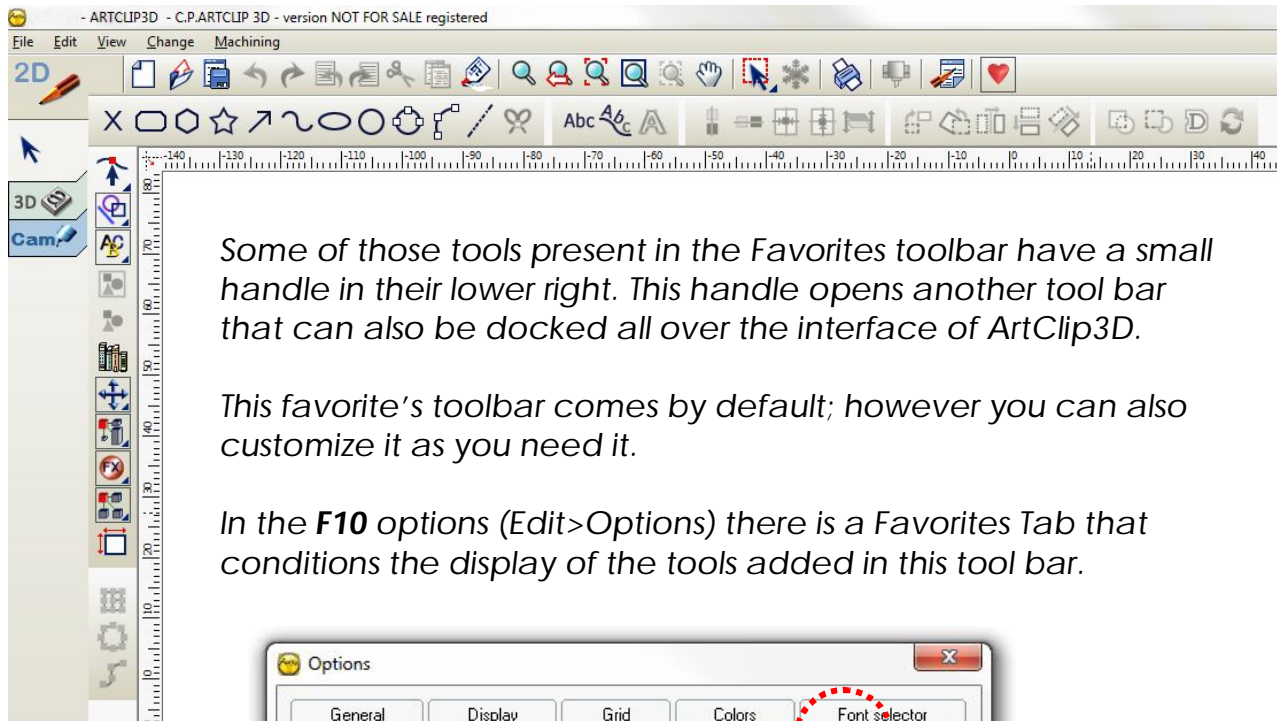
The Software opens for the first time with a minimum number of tools. To open the main toolbar click the Favorites  icon located at the top right side of your screen.



This toolbar can be resized by clicking the lower right corner and moving it to reshape the outline.



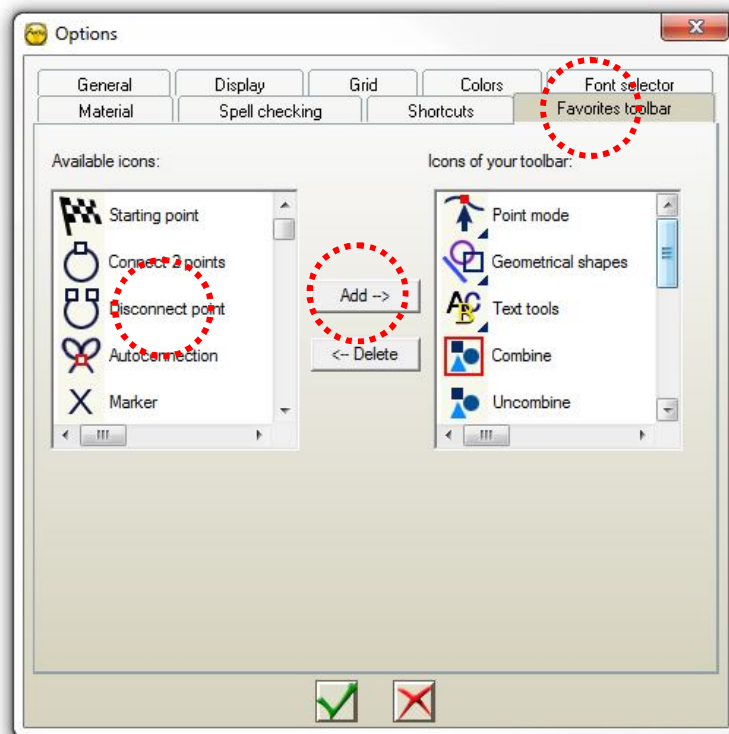
It is possible also to dock this toolbar anywhere around the interface.



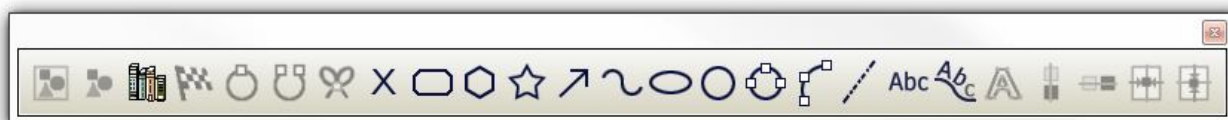
Some of those tools present in the Favorites toolbar have a small handle in their lower right. This handle opens another tool bar that can also be docked all over the interface of ArtClip3D.

This favorite's toolbar comes by default; however you can also customize it as you need it.

In the **F10** options (Edit>Options) there is a Favorites Tab that conditions the display of the tools added in this tool bar.



25 tools are settable by default.



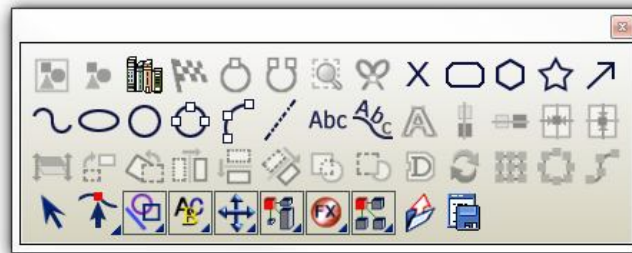
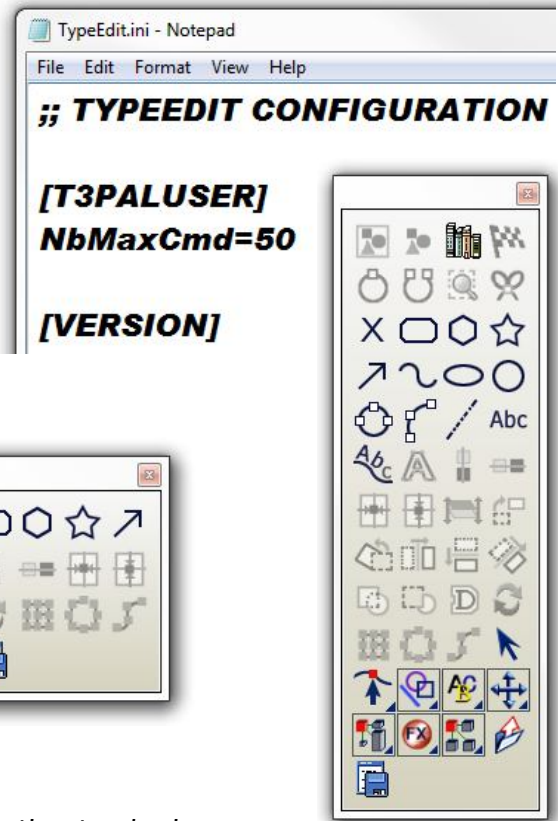
This can be changed if needed by modifying the **TypeEdit.ini** file located in the installed folder:

C:\ArtClip3D_V10\CONFIG

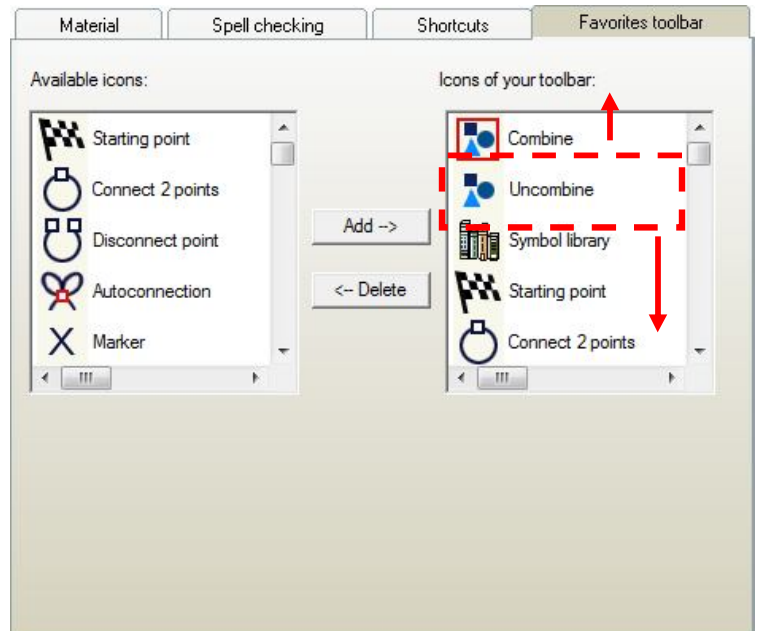
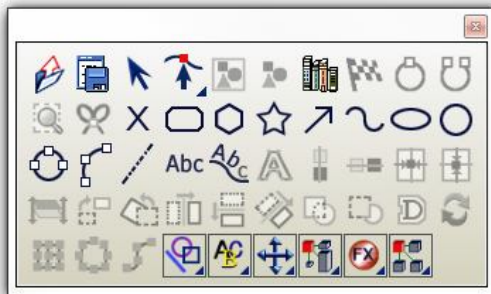
It is a file that can be opened with Notepad.

Close ArtClip3D, then by adding or modifying the following lines number of tools in the favorite toolbar increases/decrease according to this value.

[T3PALUSER]
NbMaxCmd=50



You can also from the Favorites toolbar Drag&Drop the tool wherever you prefer to see it in the tool bar list. Below is another type of toolbar set.



For any modification within the Favorites toolbar tab, you will have to make sure the **[T3PALUSER]** NbMaxCmd=XX commands are in the TypeEdit.ini