

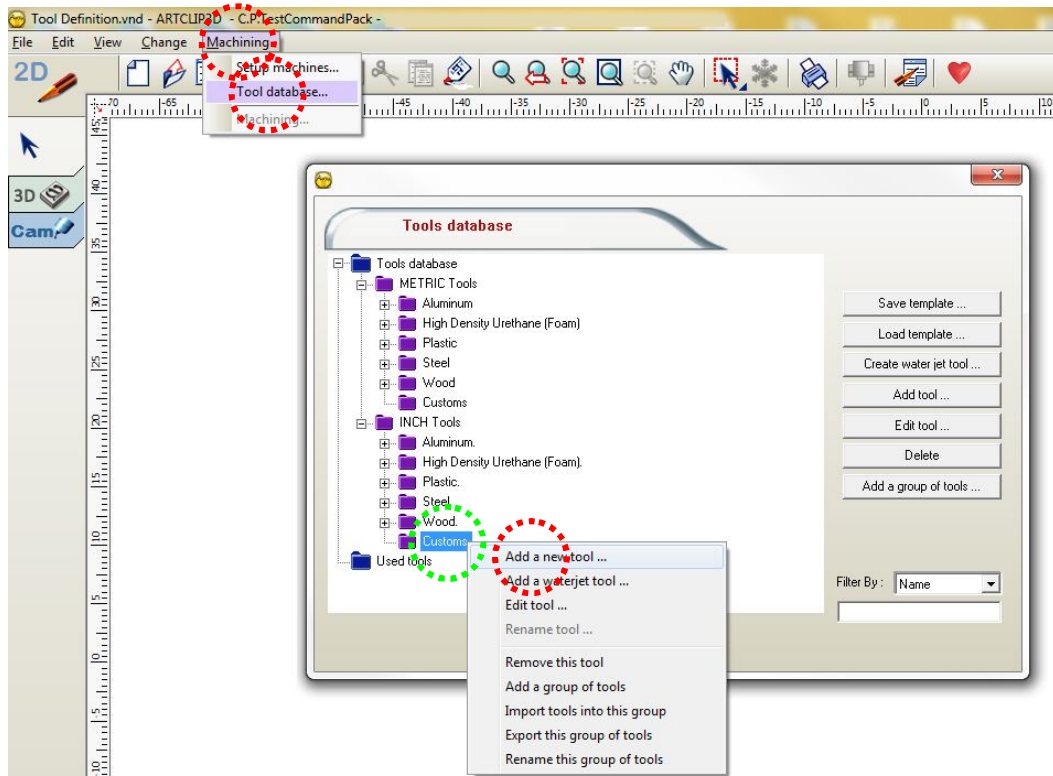



Unleash your Router's 3D Capabilities

## How to create a new tool in the tool database?

ArtClip3D comes with a comprehensive database of tools assigned with specific feed rates and spindle speed in accordance with the most used type of materials. It may happen that a tool is missing in the tool database and that you need to customize one for a specific job.

- From the Machining Menu, select the **“Tool Database...”** command. The tool database windows pops up.
- Select the **Unit** you want to save this tool in such as **INCH tools group**.
- Right click the **Customs** group and select the **“Add a new tool...”** command.



**J. Note:** The access to the tool database can also be made from the **Cam** module and the **Tool database icon** .

Type here the name you wish to give to your tool.

The Reference field allows keeping the reference from your tool supplier helping in re-order tooling.

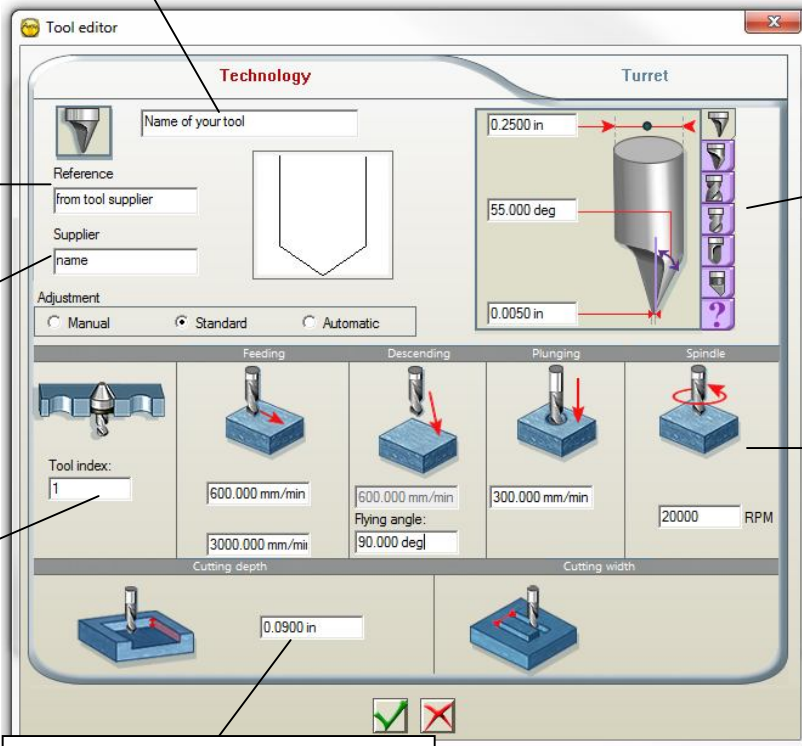
In case you would have several tool suppliers you can enter here its name.

The tool index is useful when you want to set a multi tools machining. This number will be present in the G-code.

The maximum depth of cut will define the capability for your tool to take a step and to optimize the machining type. It is also a good way to increase the tool life.

This column gathers all the tool shapes available Conical, Ball nose...

Feed rates and Spindle speed can be defined in these various fields.



Once completed the tool editor sets the tool created within its list and then it can be used at any time for your various machining.

## *J*.Tip!

When the tool database is quite loaded in tools, you can use the Filter by option. This will allow finding a tool quickly from either its name, tip or reference name.

