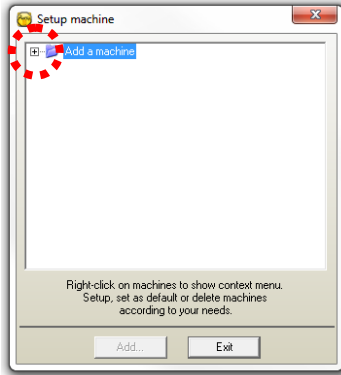




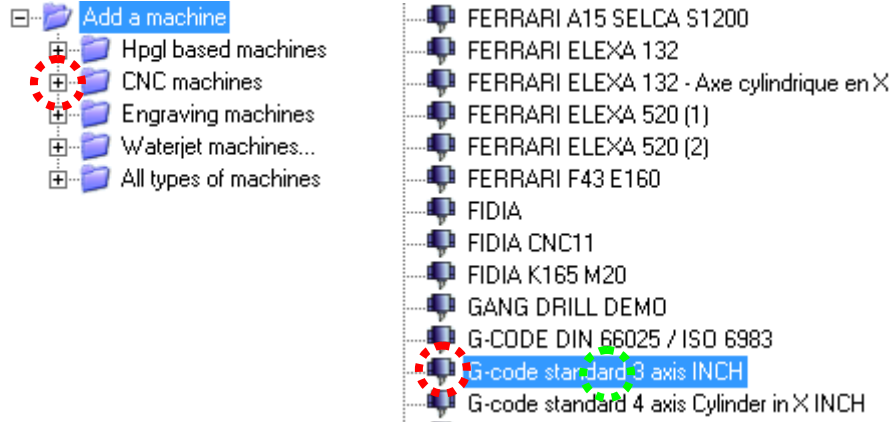
Unleash your Router's 3D Capabilities

How to install a machine to run with ArtClip3D ?

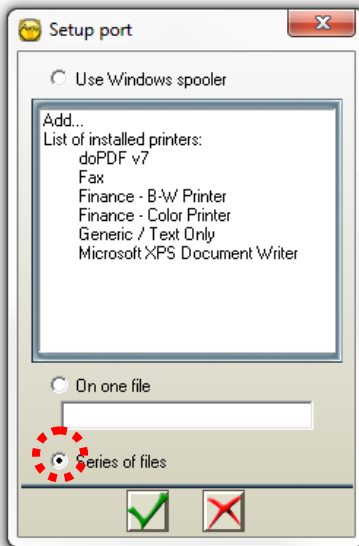
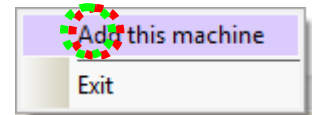
After the installation, the first opening of ArtClip3D requires to install a machine. Clicking Exit will give access to the 2D module but it is recommended to install the machine right from the beginning to leave this step finalized and concentrate on designing and machining.




By clicking the (+) on the left of the **Add a machine** command, the list of machines expands in several categories. Click the **CNC machines**.



- Select the desired machine from the expanded list and right click it. The **Add this machine** command will display. Make a left click on the command so the **Setup port** window can show up.



(If a machine is missing in the list please contact your ArtClip3D reseller who will supply the specific driver/postprocessor for your machine controller)

- Select the **Series of files** radio button which is the way to output program files under various extension names such as .NC, .CNC, .TAP etc... Then validate with the tick sign 
- The **Machine setup** window follows next giving the maximum and minimum travel motions within the 3 axis of the CNC. To ease the motions of the machine within its range, it is recommended to enter mini -100 and maxi +100.

Then validate with the OK button.

Finally click the Exit button to access ArtClip3D 2D module.

