



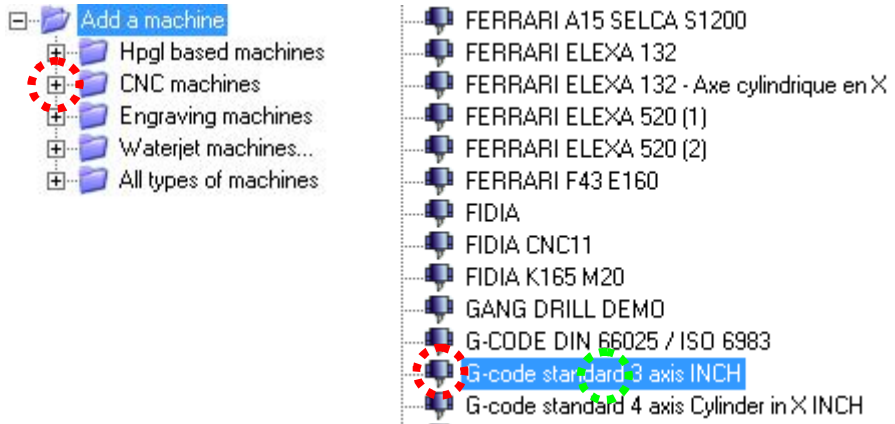
Unleash your Router's 3D Capabilities

## How to install a machine to run with ArtClip3D ?

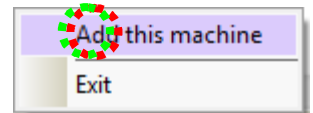
After the installation from the CD, the first opening of ArtClip3D requires to install a machine. Clicking Exit will give access to the 2D module but it is recommended to install the machine right from the beginning to leave this done and concentrate on designing and machining.



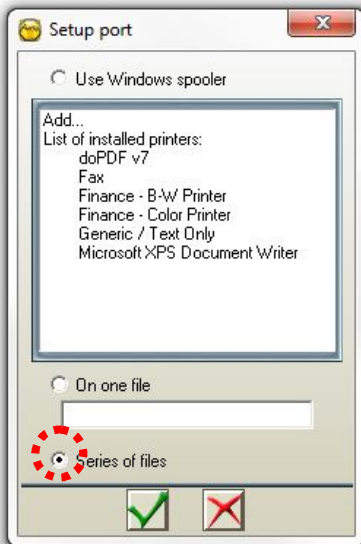
By clicking the (+) on the left of the **Add a machine** command, the list of machines expands in several categories. Click the **CNC machines**.




- Select the desired machine and right click it. The **Add this machine** command display to be left or right clicked so the Setup port window can show up.

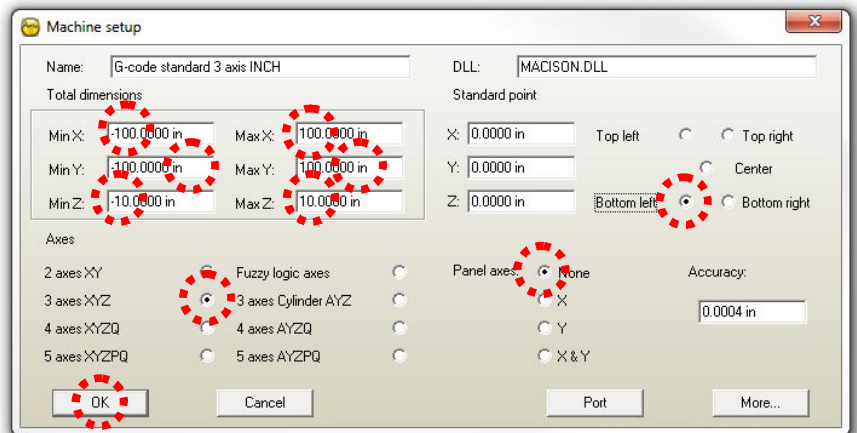


(If a machine is missing in the list please contact your ArtClip3D reseller who will supply the specific driver/postprocessor for your machine )



- Select the **Series of files** which will allow the output of program files under various extension names such as .NC, .CNC, .TAP etc... Then validate with the tick sign .

- The **Machine setup** window follows giving the maximum and minimum travel motions within the 3 axis of the CNC. To facilitate the freedom of covering the bed size of the machine, it is recommended to enter mini -100 and maxi +100.



Finally click the Exit button to access ArtClip3D.

